

# ROBOT-EYE SX-910

SX-910 can monitor a machine with two cameras

## Specifications SX-910

Resolution	1280×1024pixels*
Processing time	Min.0.015sec.
Ambient Humidity	0 ~ 45°C
Power	DC24V
Power consumption	24VA / 24W
External dimensions	10.9"(L)/8.5"(W)/2.0"(H)/277×215×50 mm
Weight	2.8lbs. / 1.25kg

\*Available for VGA (640×480)

## Compositions

Standard system	SX-910 (One camera)	SX-910TW (Two cameras)
Main unit (build in 10.4" LCD monitor) ①	1	1
CCD camera with 16mm lens ②	1	2
Halogen lamp with stand ③	1	2
I/F cable 6feet / 2m ④	1	1
Camera cable 15feet / 5m ⑤	1	2
I/O cable 15feet / 5m ⑥	1	1

Option
8mm focal length ⑦
12mm focal length ⑧
25mm focal length ⑨
35mm focal length ⑩
50mm focal length ⑪
LED Lamp (with stand) ⑫
Infrared Lamp (with stand) ⑬
Arm to hung for main unit



Standard compositions



Wide / Narrow optic angle lens



Lamp/Stand

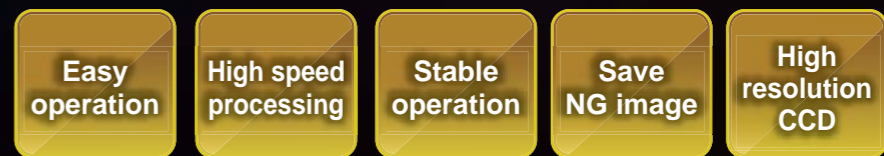
The contents of this catalogue might be revised without any notice.

The Vison System for Mold Protection

# ROBOT-EYE SX-910



Suitable for Precision molding, Multi-cavity molding,  
Insert injection molding



**SIGMAX**

**SIGMAX CO., LTD.**

Meiji Yasuda Seimei Radio Nippon Bldg.  
5-85, Choja-machi, naka-ku,  
Yokohama 231-0033 Japan.  
Tel. 045-264-2661 Fax. 045-264-2660  
www.robot-eye.co.jp info@robot-eye.co.jp

This catalogue is used vegetable oil ink and recycled paper to economize on natural resource.

Agent

**SIGMAX**  
www.robot-eye.co.jp

# ROBOT-EYE protects your valuable mold

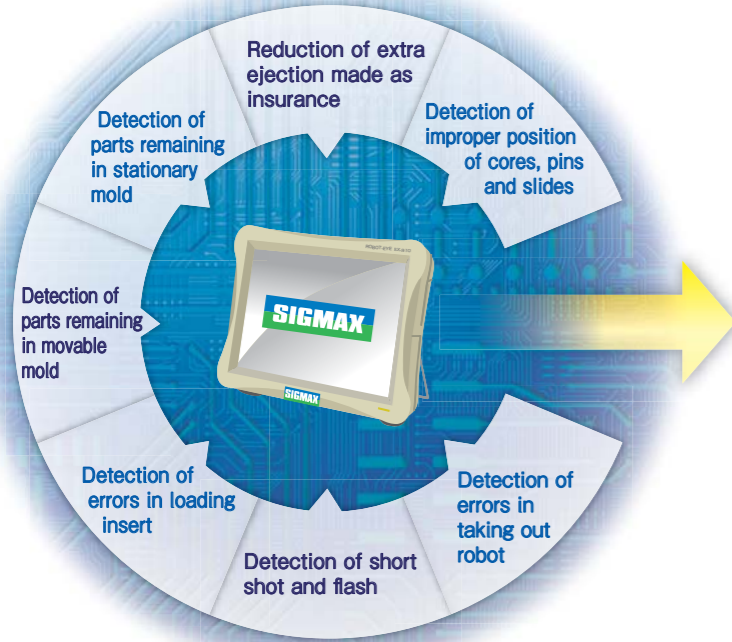


**SX-910 is debuted** by reflected customer requirement and further evolution.

SX-910 is the vision system for mold protection with high resolution touch panel on 10.4 inch LCD monitor which is purpose for easy operation, high speed treatment, stability operation and monitoring accuracy. So it can be available to take more clear picture.

In addition, SX-910 is achieved stability watch by evolved original sensitivity method. Please try to use evolved our latest model SX-910 because the function is full loading.

## Applications



## Merits of using Robot-eye

- Prevent mold damage**  
(eliminate downtime and cost for repair)
- Increase productivity through monitoring**
- Maintain quality of products detecting defects**

## Features



High resolution 10.4 inch monitor (available for high resolution camera)



Easy operation on the touch panel

### Select from 4-Languages

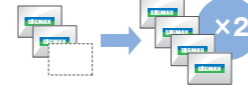
運行記録	Log
金型データ管理	Manage mold data
Japanese	English
运行记录	运行기록
模具数据管理	금형데이터관리
Chinese	Korean



Loading with USB slot

## Functions

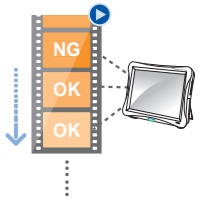
High speed processing (more than 2times processing speed to compare with existing model)



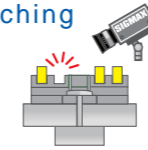
Reset by safety door open and close (under Automatic /Manual)



Save NG movie data



Insert watching is easy by our original watching method.



Area setting (max. area 128)

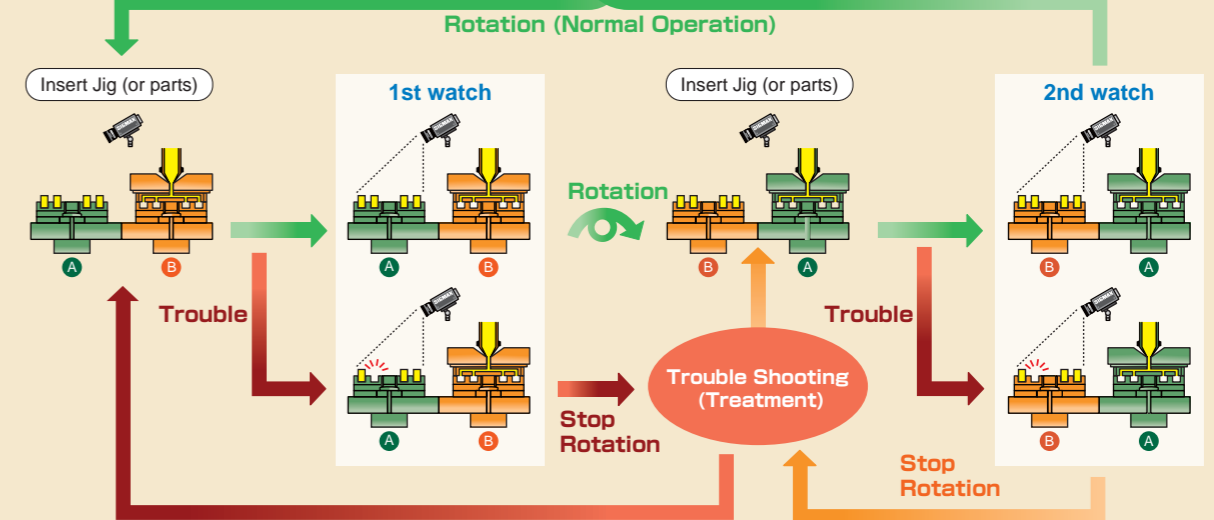


Log data function (by graph, thumbnail)



## Monitoring process

### Vertical injection molding



### Horizontal Injection molding

